



# New Product Bulletin

## Diesel Fuel Supplement® +Cetane Boost® Technical Bulletin 1000



**Diesel Fuel Supplement®  
+Cetane Boost® is endorsed and  
recommended by Cummins.**

# DIESEL FUEL SUPPLEMENT® +CETANE BOOST®

TECHNICAL BULLETIN 1000

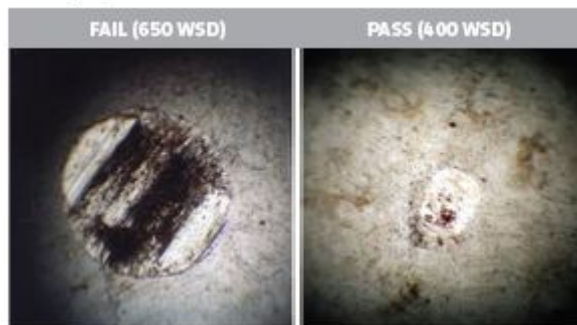


## Boosts Cetane

There is a direct relationship between a diesel fuel's cetane number and its ignition point. Delayed ignition is a primary cause of increased emissions and inferior engine performance. The lower the cetane number, the longer the ignition delay. Fuels with high cetane numbers burn more quickly and more completely, resulting in smoother running engines with less power lag and easier engine starting.

## Contains Slickdiesel® for Maximum Fuel Lubrication

**Slickdiesel** is a proprietary Power Service diesel fuel lubricator that sets the standard for lubrication of diesel fuel injection systems. The components of diesel fuel injection systems are lubricated by diesel fuel. Without proper lubrication, fuel injectors and pumps are subjected to increased wear rates and premature failure. **Diesel Fuel Supplement +Cetane Boost** contains **Slickdiesel** and exceeds the ASTM D-975 specification of 520 Wear Scar Diameter (WSD) for lubricity in diesel fuel, allowing operators to achieve the EMA recommended 460 WSD.



High Frequency Reciprocating Rig (HFRR) evaluates the lubricity of diesel fuel. The Wear Scar Diameter (WSD) maximum is 520 microns. A WSD measuring larger than 520 does not meet lubricity specifications.

513 Peaster Highway • Weatherford, Texas 76086-1089  
817.599.9486 • 800.643.9089  
Power Service Products, Inc. ©2017  
04.18.17 25457

## TYPICAL PHYSICAL PROPERTIES OF DIESEL FUEL SUPPLEMENT +CETANE BOOST

Color	Brown
Density (lbs/gal)	
Customer Convenience +Cetane Boost Formula (1:400)	7.7
Concentrated +Cetane Boost Formula (1:1,000)	7.7
Concentrated +Cetane Boost Formula (1:1,500)	7.8
Sulfur Content	<15 parts per million (ppm)
Flash Point	
Customer Convenience +Cetane Boost Formula (1:400)	101°F
Concentrated +Cetane Boost Formula (1:1,000)	110°F
Concentrated +Cetane Boost Formula (1:1,500)	107°F
Pour Point	
Customer Convenience +Cetane Boost Formula (1:400)	-70°F
Concentrated +Cetane Boost Formula (1:1,000)	-30°F
Concentrated +Cetane Boost Formula (1:1,500)	-15°F
Minimum Storage Temperature	10°F
Solubility	
In Diesel Fuel	Completely Soluble
In Biodiesel Blends	Completely Soluble
In Home Heating Oil	Completely Soluble
In Kerosene	Completely Soluble
Shipping and Handling	
Part Nos. 1016, 1025, 1080, 1128, 1050, 1055	Not regulated by DOT
Part Nos. 1060, 1260	Combustible Liquid N.O.S. NA 1993
	(Petroleum Distillates) Marine Pollutant (2-Ethylhexyl Nitrate)

Diesel Fuel Supplement +Cetane Boost is safe for use in all diesel engines. This diesel fuel additive complies with the federal low sulfur content requirements for use in diesel motor vehicles and nonroad engines.

## DIRECTIONS FOR USE

Add **Diesel Fuel Supplement +Cetane Boost** as directed on the container label. To ensure thorough mixing, add prior to filling tanks with diesel fuel.

PART#	PACK	TREATS
<b>CUSTOMER CONVENIENCE +CETANE BOOST FORMULA – 1:400 TREATMENT RATIO</b>		
1016-09	9/116-Ounce	Up to 40 Gallons
1025-12	12/132-Ounce	Up to 100 Gallons
1080-06	6/180-Ounce	Up to 250 Gallons
<b>CONCENTRATED +CETANE BOOST FORMULA – 1:1,000 TREATMENT RATIO</b>		
1128-04	4/1 One-Gallon	Up to 1,000 Gallons
1060	260-Gallon Tote	Up to 260,000 Gallons
<b>CONCENTRATED +CETANE BOOST FORMULA – 1:1,500 TREATMENT RATIO</b>		
1050-02	Two/2.5-Gallon	Up to 3,750 Gallons
1055	55-Gallon Drum	Up to 82,500 Gallons
1260	260-Gallon Tote	Up to 390,000 Gallons
1000	6,000 Gallon Min.	Up to 9,000,000 Gallons



Endorsed and recommended  
by Cummins Inc.

**POWER SERVICE PS**  
**Diesel Additives**



[Diesel Fuel Supplement Technical Bulletin.pdf \[1\]](#)

English

[Additives \[2\]](#)  
Not Applicable

Products

